

Presents

## CHEMICAL DEPENDENCY AND ABUSE

### TARGET AUDIENCE

This educational activity is designed for registered nurses working in various practice settings. The content would be of value to any healthcare professional.

### LEARNING OUTCOME

To increase the learner's knowledge of chemical abuse and dependency and to better understand the most current treatment modalities in order to improve nursing care and patient outcomes.

### OBJECTIVES

At the conclusion of this educational activity the participant will be able to:

1. Understand addiction and how to identify a patient struggling with this illness.
2. List and describe common behaviors and defenses in patients with addiction.
3. Discuss interventions and education on treatment options for patients struggling with addiction.
4. Review the historical trends of drug abuse.
5. Describe the new, emerging drugs of abuse.
6. Identify risk factors for substance use disorders.
7. Describe behaviors of a nurse with impaired practice.
8. Explain the purpose and components of monitoring incorporated into the LSBN Recovering Nurse Program.
9. Discuss Lafayette's narcotic issues and the streetwise knowledge needed to help combat the problem from the perspective of law enforcement.
10. Describe the signs and symptoms of a drug abuse patient one may encounter in the emergency room.

### COURSE DESCRIPTION

Every day, more than 90 Americans die after overdosing on opioids. Opioid addiction is a serious national crisis and affects everyone it touches. However, opioids are not the only drug wreaking havoc on its abusers. Other chemicals, drugs, and alcohol play a huge role in the disease called addiction. At this program, we will focus on understanding the physical and psychological aspects of addiction – whether it's alcohol, illegal drugs, or prescription drugs; each can have a detrimental effect on our patients and their families. Expert presenters will focus on identification of dependency, when use becomes abuse, physical and psychological treatment plans, support for nurses dealing with addiction, and the most commonly abused and emerging chemicals and substances in our area.

### AGENDA

February 23, 2018

7:30-8:00	Registration and Continental Breakfast
8:00-8:10	Welcome and Announcements <i>Robbie Stefanski, MSN, RN</i>
8:10-9:40	Substance Abuse: Identifying, Intervening, and Treatment Options <i>Kerri Cunningham, MSW, LCSW, LAC</i>
9:40-9:55	Break
9:55-11:25	Drugs of Abuse Detected in Impairment and Seized Drug Evidence <i>Rebecca Nugent, BS, MS</i>
11:25-12:25	Lunch Break (Available on site through the Petroleum Club, \$18.00 cash or check payable to Petroleum Club or participant may leave and return at 12:25 PM)
12:25-1:25	LSBN's Recovery Nurse Program <i>Barbara McGill, MSN, RN</i>
1:25-1:40	Break
1:40-2:40	Lafayette's Metro Narcotic Task Force: Current Trends and Statistics <i>Sgt. Karry Falcon, NR-EMT-P</i>

### CONTINUING EDUCATION

University of Louisiana at Lafayette College of Nursing and Allied Health Professions is accredited as a provider of continuing nursing education by the American Nurses Credentialing Center's Commission on Accreditation.

Louisiana State Board of Nursing – Provider # 9.

To receive 5.0 contact hours, the participant must attend the entire program, and complete and submit the Contact Hour and Evaluation forms.

### DISCLAIMER

American Nurses Credentialing Center (ANCC) accreditation applies only to the educational content of the program. University of Louisiana at Lafayette College of Nursing and Allied Health Professions Continuing Nursing Education Program and ANCC Commission on Accreditation does not approve or endorse any product.

### SPECIAL NEEDS

University of Louisiana at Lafayette will seek to accommodate persons with special needs. If you have a special need which may require accommodations, please notify Continuing Nursing Education, 337) 482-6682 or email [nursing\\_ce@louisiana.edu](mailto:nursing_ce@louisiana.edu) five (5) days in advance to make arrangements.

### FACULTY

#### Kerri Cunningham, MSW, LCSW, LAC

Ms. Cunningham is a Licensed Clinical Social Worker and Addictions Counselor. She received her master's in social work from Louisiana State University. She is the Program Director for Victory Addiction Recovery Center in Lafayette, LA. Ms. Cunningham has 12 years of expertise in all levels of substance abuse counseling from inpatient treatment to private practice. Her holistic approach to treatment is a focus on co-occurring and dual diagnosis with substance abuse clients. She specializes in Dialectical Behavioral Therapy, EMDR, interventions and trauma counseling.

#### Rebecca Nugent, BS, MS

Ms. Nugent has a BS in Biology with a minor in Chemistry from Nicholls State University and a MS in Biology from University of Louisiana at Lafayette. In 2004, she joined the crime lab and was trained in drug chemistry and later as a crime scene secondary where she displayed skills in an episode of *Psychic Detectives*. In 2011, she was promoted to drug unit supervisor then manager in 2013 of both the toxicology and drug chemistry units. She has been qualified as an expert 21 times in forensic drug chemistry in state and/or federal court. She has been appointed to the State Epidemiology Workgroup, the Prevention Systems Committee, the Governor's DWI-Vehicular Homicide Taskforce, and both the State and Regional Area's Impaired Driver's Emphasis Teams. She assists in the identification, banning, and education of new synthetic drugs that are a public health hazard along with Poison Control and DHH. She is also part of the team assembled for the Strategic Highway Safety Plan to identify the severity of drug impaired driving in Louisiana.

#### Barbara McGill, MSN, RN

Ms. McGill has been a nurse for over 40 years with 18 of those years spent with the Louisiana State Board of Nursing. Currently she is the LSBN Director of the Recovery Nurse Program and Monitoring. In addition to assisting nurses into the Recovering Nurse Program and monitoring them for compliance, she also monitors nurses who have Board Orders which may not be drug or alcohol related. Ms. McGill's previous nursing roles include former Associate Nursing Administrator and Clinical Director at Charity Hospital in New Orleans and Director of Nursing at River Oaks Hospital, among others.

#### Sergeant Karry Falcon, NR-EMT-P

Sgt. Falcon has worked for the Lafayette Parish Sheriff's Office for twenty years. During this time, he has had several roles on the Lafayette Metro Narcotics Task Force including Narcotics Investigator, DEA Task Force Agent, and currently as the Narcotics Supervisor. Sgt. Falcon is also a trained paramedic and is part of the S.W.A.T. team as an Operator/Tactical Medic and on the Search and Recovery Unit as a diver and a Dive Team Medic.

### REFUND

**REFUNDS WILL NOT BE ISSUED FOR CANCELLATIONS OR INCORRECT FEE SUBMISSIONS. FEE MAY BE APPLIED TO FUTURE PROGRAMS IF YOU CANCEL AT LEAST TWO DAYS PRIOR TO THE PROGRAM.**

**For your convenience, the College of Nursing accepts telephone registrations. However, it will be necessary to submit payment via mail.**

# CHEMICAL DEPENDENCY AND ABUSE

February 23, 2018

## REGISTRATION FORM

Name: \_\_\_\_\_  
(Last) (First) (Middle)

Address: \_\_\_\_\_

City: \_\_\_\_\_ State: \_\_\_\_\_ Zip: \_\_\_\_\_

Phone (H): \_\_\_\_\_ (W): \_\_\_\_\_

(C): \_\_\_\_\_

E-mail: \_\_\_\_\_

Employer: \_\_\_\_\_

**REGISTRATION CAPACITY WILL BE LIMITED**

*Early Registration Submission is Suggested.*

(CHECK ONE)

### REGISTRATION

_____ Individual	\$80.00
_____ Subscriber Participant	\$20.00
_____ Retired RN	\$30.00
_____ Undergraduate Students and Dietetic Interns	\$10.00
_____ Graduate Students	\$40.00

Please add \$10.00 for registrations received after Monday, February 19, 2018.

For your convenience the College of Nursing accepts telephone registrations. However, it will be necessary to submit payment via mail.

**FOR MORE INFORMATION, CALL 337-482-6682**

**PLEASE MAKE CHECK PAYABLE TO:**

**UL Lafayette**

**College of Nursing & Allied Health Professions**

**MAIL WITH REGISTRATION INFORMATION TO:**

UL Lafayette  
College of Nursing & Allied Health Professions  
**CONTINUING NURSING EDUCATION**  
P.O. Box 43810  
Lafayette, LA 70504-3810  
Phone: 337-482-6682  
Fax: 337-482-5053  
Email: nursing\_ce@louisiana.edu  
Web: www.nursing.louisiana.edu



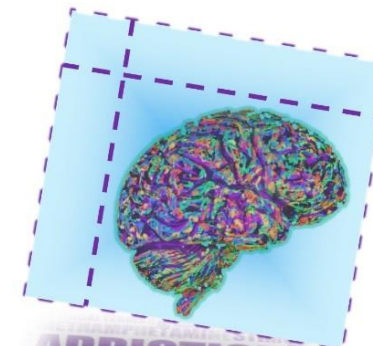
University of Louisiana at Lafayette  
College of Nursing and Allied Health Professions  
Continuing Nursing Education Program  
P.O. Box 43810  
Lafayette, LA 70504  
Return Service Requested

NON PROFIT ORG  
U.S. POSTAGE  
PAID  
PERMIT NO. 218  
LAFAYETTE, LA  
70504

University of Louisiana at Lafayette  
College of Nursing and Allied Health Professions  
Continuing Nursing Education Program



~Presents~



## CHEMICAL DEPENDENCY AND ABUSE

Friday, February 23, 2018

8:00 AM – 2:40 PM

Contact Hours: 5.0

### 2017-2018 Subscribers

Abbeville General Hospital  
Acadiana Brain Injury Center  
Complete Home Health  
Cornerstone Village South  
First Option Home Health  
Heart Hospital of Lafayette  
Iberia Medical Center – Main Campus  
Lafayette General Health – Main Facilities  
Lafayette Juvenile Detention Home  
LPSS – Nursing Health Services  
Opelousas General Health System  
Our Lady of Lourdes Regional Medical Center  
Park Place Surgical Hospital  
Region IV Nurses

Presented at  
Petroleum Club of Lafayette  
111 Heymann Blvd  
Lafayette, LA